

## INTEGRATOR PRICE LIST - JANUARY 2022

### Install Amplifiers - Ottocanali Series

#### Ottocanali Series



The Ottocanali is an 8-channel, Class-D power amplification platform capable of supplying up to 12,000 W of power at 4 Ohms.

Designed for multi-zone applications in medium-large scale installs, all versions in the Ottocanali Series support any combination of Lo-Z or Hi-Z output connections and include universal switch-mode power supplies with PFC.

All amplifiers in the series feature switchable main/aux signal inputs per channel, mono-bridgeable channel pairs, and a wide range of functions such as system control, alarms, GPI/O and monitoring.

The Series also includes optional DSP+D versions outfitted with Dante by Audinate inputs.

<b>Ottocanali-4K4</b> £3,999.00	4000W / 8-channel flexible amplifier.
<b>Ottocanali-4K4 DSP+Dante</b> £4,799.00	4000W / 8-channel flexible amplifier with integral DSP and Dante.
<b>Ottocanali-8K4</b> £4,899.00	8000W / 8-channel flexible amplifier.
<b>Ottocanali-8K4 DSP+Dante</b> £5,699.00	8000W / 8-channel flexible amplifier with integral DSP and Dante.
<b>Ottocanali-12K4</b> £6,099.00	12000W / 8-channel flexible amplifier.
<b>Ottocanali-12K4 DSP+Dante</b> £6,899.00	12000W / 8-channel flexible amplifier with integral DSP and Dante.

## INTEGRATOR PRICE LIST - JANUARY 2022

### Install Amplifiers - Quattrocanali Series

#### Quattrocanali Series



The Quattrocanali is a 4-channel, Class-D power amplification platform designed for small-medium scale installations where system flexibility is a must.

Offering the same reliability and renowned audio quality of all Powersoft amplifier platforms, the Quattrocanali Series operates with both Lo-Z and 70/100V distributed lines, or any mix of the two.

Quattrocanali DSP-D versions enable extensive amplifier control, as well as system and load monitoring via PC and ArmoniaPlus.

<b>Quattrocanali-1204</b> £1,699.00	1200W / 4-channel flexible amplifier.
<b>Quattrocanali-1204 DSP+Dante</b> £2,099.00	1200W / 4-channel flexible amplifier with DSP and Dante.
<b>Quattrocanali-2404</b> £2,099.00	2400W / 4-channel flexible amplifier.
<b>Quattrocanali-2404 DSP+Dante</b> £2,499.00	2400W / 4-channel flexible amplifier with DSP and Dante.
<b>Quattrocanali-4804</b> £2,799.00	4800W / 4-channel flexible amplifier.
<b>Quattrocanali-4804 DSP+Dante</b> £3,199.00	4800W / 4-channel flexible amplifier with integral DSP and Dante.
<b>Quattrocanali-8804 DSP+Dante</b> £3,899.00	9600W / 4-channel flexible amplifier with integral DSP and Dante.

## INTEGRATOR PRICE LIST - JANUARY 2022

### Install Amplifiers - Duecanali Series

#### Duecanali Series



The Duecanali Series offers remarkable low power consumption and heat dissipation, in addition to Powersoft's renowned audio quality and reliable performance - all in a compact, lightweight unit.

The Duecanali is a Class-D power amplification platform designed for larger 2-channel install applications.

Duecanali DSP+D versions also offer built-in state-of-the-art DSP, as well as Dante, providing additional system flexibility and extensive amplifier control.

<b>Duecanali-804</b> £1,349.00	800W / 2-channel flexible amplifier.
<b>Duecanali-804 DSP+Dante</b> £1,649.00	800W / 2-channel flexible amplifier with integral DSP and Dante.
<b>Duecanali-1604</b> £1,649.00	1600W / 2-channel flexible amplifier.
<b>Duecanali-1604 DSP+Dante</b> £1,949.00	1600W / 2-channel flexible amplifier with integral DSP and Dante.
<b>Duecanali-4804</b> £2,599.00	4800W / 2-channel flexible amplifier.
<b>Duecanali-4804 DSP+Dante</b> £2,899.00	4800W / 2-channel flexible amplifier with integral DSP and Dante.
<b>Duecanali-6404 DSP+Dante</b> £3,499.00	6400W / 2-channel flexible amplifier with integral DSP and Dante.

## INTEGRATOR PRICE LIST - JANUARY 2022

### Install Amplifiers - Mezzo Series

#### Mezzo Series



Mezzo offers the same sound clarity, reliability and overall build quality of any Powersoft amplifier, but in a half-rack unit form factor. It comes with a state-of-the-art DSP, in 2 power sizes with 2 or 4 channels of output.

All models offer multiple analog input options, and the 2 channel versions feature line-level outputs.

AD versions of Mezzo add audio networking capabilities with Dante™/AES67 and an internal Gigabit switch with a second port so that multiple products can share the same network.

<b>Mezzo-322A</b> £799.00	320W / 2-channel compact amplifier with DSP.
<b>Mezzo-322AD</b> £929.00	320W / 2-channel compact amplifier with DSP and Dante.
<b>Mezzo-602A</b> £969.00	600W / 2-channel compact amplifier with DSP.
<b>Mezzo-602AD</b> £1,099.00	600W / 2-channel compact amplifier with DSP and Dante.
<b>Mezzo-324A</b> £929.00	320W / 4-channel compact amplifier with DSP.
<b>Mezzo-324AD</b> £1,149.00	320W / 4-channel compact amplifier with DSP and Dante.
<b>Mezzo-604A</b> £1,189.00	600W / 4-channel compact amplifier with DSP.
<b>Mezzo-604AD</b> £1,399.00	600W / 4-channel compact amplifier with DSP and Dante.

## INTEGRATOR PRICE LIST - JANUARY 2022

### Touring Amplifiers - X Series

#### X Series



Designed for both touring and sound system installations, the X Series is an amplifier that raises the bar in amplifier design and functionality.

Both versions of the X Series - the X8 (8-channel) and X4 (4-channel) - come standard with Ethernet for extensive amplifier control, full DSP functionality, routing, matrix and worldwide compatible three-phase power supply.

The X Series natively supports AES3 and is also available with redundant Brooklyn II based Dante. Providing up to 4 different selectable input sources per channel.

<b>X4</b> £6,599.00	4-channel benchmark amplifier with DSP. 4 x 5200W at 2 Ohm or 4 x 3000W at 4 Ohm.
<b>X8</b> £10,599.00	8-channel benchmark amplifier with DSP.
<b>X4L</b> £11,299.00	4-channel benchmark amplifier with DSP. 4 x 8200W at 2 Ohm or 4 x 6800W at 4 Ohm.
<b>X4-Dante</b> £7,399.00	X4 amplifier but with added Dante connection.
<b>X8-Dante</b> £11,399.00	X8 amplifier but with added Dante connection.
<b>X4L-Dante</b> £12,299.00	X4L amplifier but with added Dante connection.

## INTEGRATOR PRICE LIST - JANUARY 2022

### Touring Amplifiers - T Series

#### T Series



The T Series offers Powersoft's renowned flexibility and performance. Featuring onboard DSP and Dante by Audinate inputs, in a cost-effective, 1 RU unit, designed for small-medium scale systems.

Available in both 4-channel and 2-channel, with per channel power ranging from 750W to 3000W.

In addition to analog, the T Series includes AES3 and Dante inputs, which are optimised for daisy-chained distribution of 2-channel audio to multiple amplifiers with no need for external switches or splitters.

**T302** | 3000W / 2-channel high-performance amplifier with DSP and Dante.  
 £2,399.00

**T304** | 3000W / 4-channel high-performance amplifier with DSP and Dante.  
 £2,699.00

**T602** | 6000W / 2-channel high-performance amplifier with DSP and Dante.  
 £2,899.00

**T604** | 6000W / 4-channel high-performance amplifier with DSP and Dante.  
 £3,399.00

**T902** | 8000W / 2-channel high-performance amplifier with DSP and Dante.  
 £3,399.00

**T904** | 8000W / 4-channel high-performance amplifier with DSP and Dante.  
 £4,099.00

### Touring Amplifiers - K Series

#### K Series

**K20DSP-KAESOP**  
 £4,599.00



The K20 impresses with up to 18000W in a single rack space, make it one of the most powerful amplifiers of its size. Ideal for subwoofers requiring relatively high continuous power and ample headroom.

The K20 DSP+KAESOP amounts to a fully integrated, highly sophisticated yet easy to use power source. Including state-of-the-art sound shaping, system management capabilities and remote control.

## INTEGRATOR PRICE LIST - JANUARY 2022

### K Series Accessories

#### K Series Accessories

**KAESOP-Board** | KAESOP plug-in board for Powersoft K Series.  
 £399.00

**KDSP-Board** | Optional DSP platform - customer installed.  
 £599.00

**KStep-Up-Card** | Power upgrade for the K4, K6 and K8.  
 £329.00

**Smart-Card** | K Series preset storage Smart Card.  
 £45.00

### Wall Mounted Panels

#### WMP Series



The WMP are a series of solutions aimed at remotely controlling key system functionalities, such as level control, source selection, and scene selection.

These passive controls are sharable over the network, meaning that a passive wall controller can be connected to one amplifier via GPI and control the parameters of other devices in the same network.

**WMPLev-W** | Square level controller that can be configured to adjust the level of an amplifier output, as well as of single or multiple zones. White  
 £71.00

**WMPLev-B** | Same as the WMPLev-W but in Black.  
 £71.00

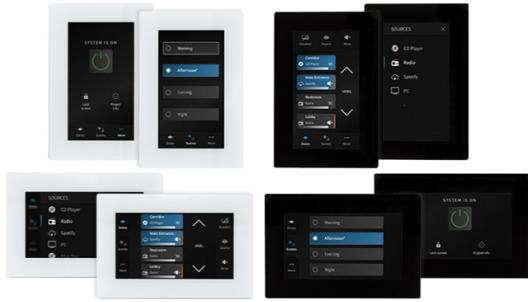
**WMPSel-W** | Square source selectors that allow users to pick the source for a particular zone. The same controller can be used as Scene selector, which allows the user to choose from different system configurations with the turn of a knob. White.  
 £71.00

**WMPSel-B** | Same as WMPSel-W but in Black.  
 £71.00

## INTEGRATOR PRICE LIST - JANUARY 2022

### Wall Mounted Touch Screen

#### WM Touch



The WM Touch is a wall-mounted touch screen solution aimed at remotely controlling audio system functionalities, such as zone level and source selection, system scenes recall and system on/off.

The Touch is designed to fit single gang electrical boxes from all countries and can be mounted vertically or horizontally. Each box contains the necessary metal frame for wall mounting.

Designed to match Mezzo's routing matrix capabilities, WM Touch can flawlessly integrate in a Dynamic Music Distribution system, and can be conveniently configured through ArmoniaPlus.

**WMTouch/B**  
£419.00

Wall mounted touch screen control solution for managing zone levels, source selection, scene recalls and system on/off. Black.

**WMTouch/W**  
£419.00

Same as WMTouch/B but in White.